

E / EV / GV Series Automated Dispensing Systems

Instructions for Height Sensor (P/N 7361667) Installation

Tools and Supplies

- 1.5 mm, 2 mm, and 3 mm hex keys
- M3 screws and washers
- M4 screws, washers, and hex nuts



Wiring Connections to the Robot I/O Port

- Solder wire leads from each cable. Connector included in package. Refer to table below for I/O pin assignments.

Robot I/O Port Pin Assignment

Pin 1	Input 1	Pin 14	Output 1
Pin 2	Input 2	Pin 15	Output 2
Pin 3	Input 3	Pin 16	Output 3
Pin 4	Input 4	Pin 17	Output 4
Pin 5	Input 5	Pin 18	Output 5
Pin 6	Input 6	Pin 19	Output 6
Pin 7	Input 7	Pin 20	Output 7
Pin 8	Input 8	Pin 21	Output 8
Pin 9	n/a	Pin 22	n/a
Pin 10	n/a	Pin 23	n/a
Pin 11	Ground	Pin 24	+24 VDC
Pin 12	Ground	Pin 25	+24 VDC
Pin 13	Ground	n/a	n/a



- Height sensor (probe) cable has three wire leads to solder to connector.

Height Sensor Cable Wire Colors

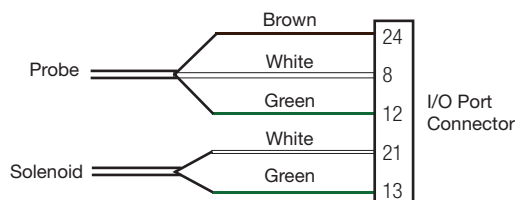
Brown	+24V
White	Signal (connect to input)
Green	Ground

- Solenoid cable has two wire leads to solder to connector.

Solenoid Cable Wire Colors

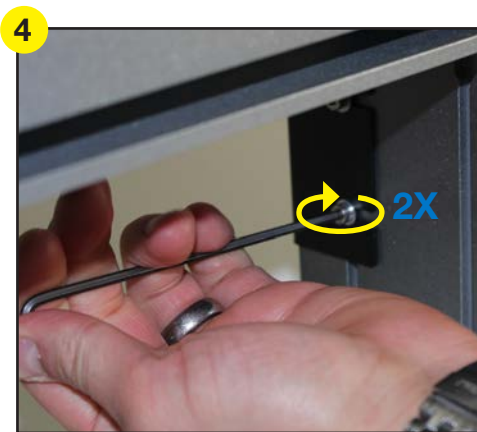
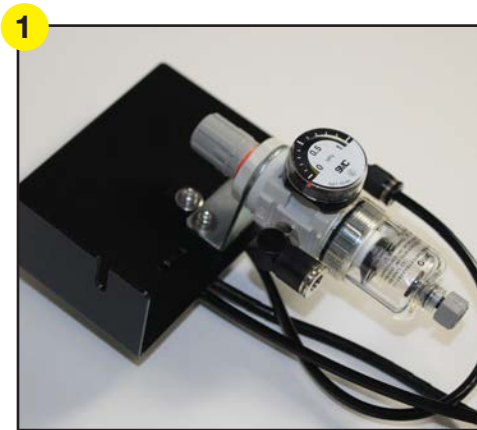
White	Signal (connect to output)
Green	Ground

- Example of wiring diagram using Input 8 for the height sensor signal and Output 8 for the solenoid signal.

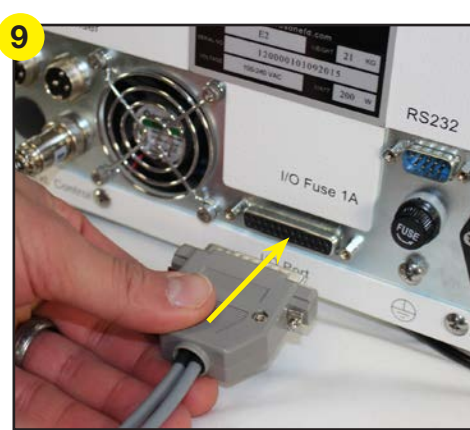
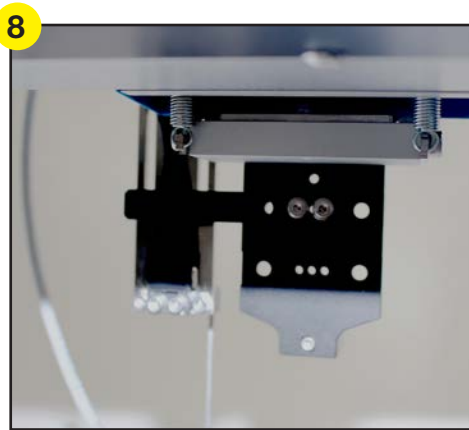
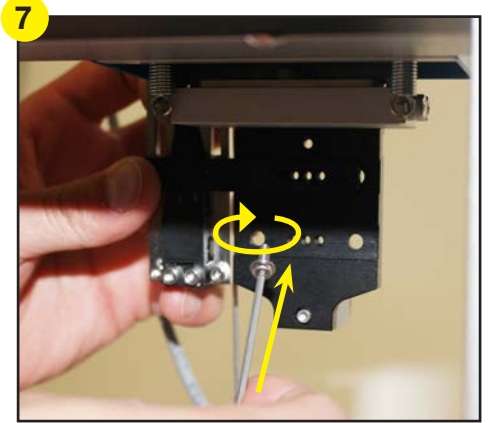
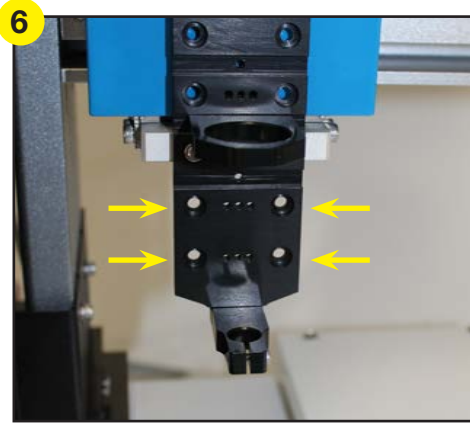


NOTE: Refer to robot manual for programming setup and functionality.

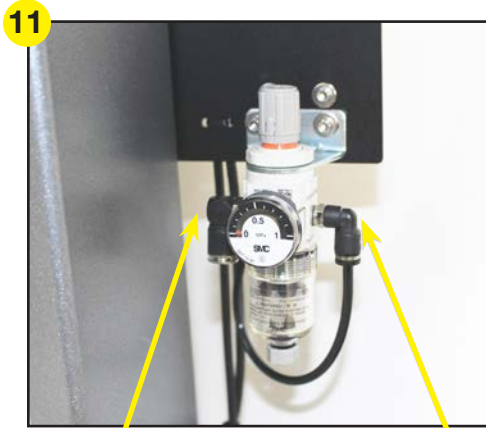
Solenoid Installation



Height Sensor Installation

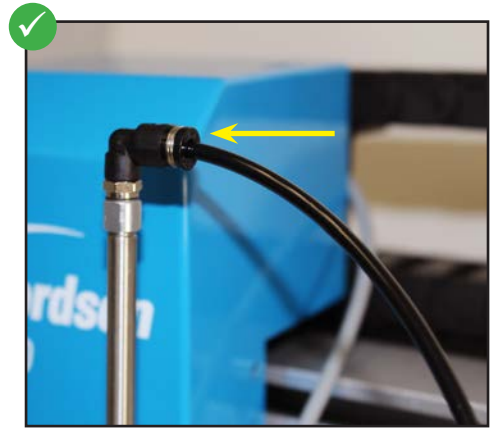


Air Tubing Installation



6 mm tubing
(from supply)

4 mm tubing
(to height
sensor)



Installation Complete



For Nordson EFD sales and service in over 40 countries, contact Nordson EFD or go to www.nordsonefd.com.

Global

800-556-3484; +1-401-431-7000
info@nordsonefd.com

Europe

+44 (0) 1582 666334
uk@nordsonefd.com

Asia

China: +86 (21) 3866 9006; china@nordsonefd.com
India: +91 80 4021 3600; india@nordsonefd.com
Japan: +81 03 5762 2760; japan@nordsonefd.com
Korea: +82-31-736-8321; korea@nordsonefd.com
SEAsia: +65 6796 9522; sin-mal@nordsonefd.com