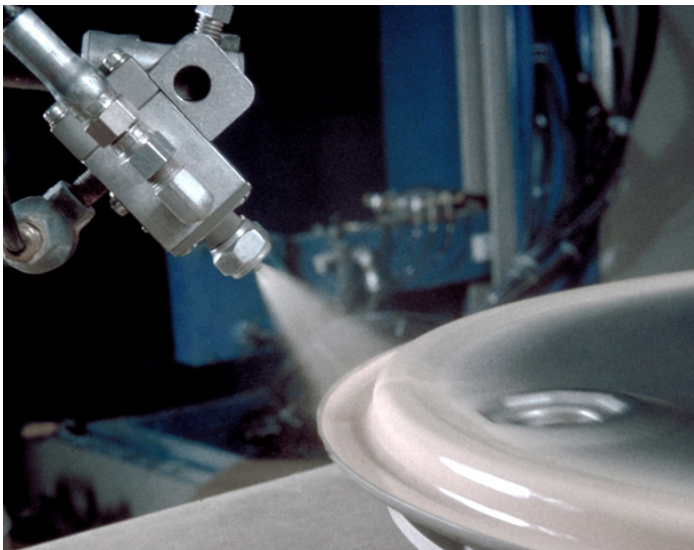
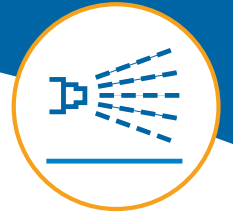


# Model A7A Automatic Airless Spray Guns

**Single or dual-chamber automatic spray guns for versatile, reliable high-production airless painting applications.**



**A7A guns are used on high-speed drum painting lines to deliver fast, precise coating coverage.**

Nordson A7A automatic airless spray guns are designed to deliver maximum reliability in high-production airless painting, sealant and adhesive applications. Nordson airless systems, featuring A7A guns, produce fine atomization and a soft, controllable spray to deliver excellent finish quality with minimal overspray. Air-actuated A7A guns provide fast response time (30 to 40 milliseconds) and high-speed cycling capability (up to 2500 cycles per minute), and are ideal for coating situations requiring precise material application.

## Meet Varying Requirements

Nordson A7A guns are available in single and dual chamber, and dual-chamber angled models, and can be used in either noncirculating or circulating heated airless applications.

Standard A7A guns are constructed of aluminum and steel, while stainless steel models can be used with waterbornes, highly corrosive materials or in special food and drug applications. A wide range of standard and special models are also available to meet unique application requirements, including extended-nozzle versions for coating recessed areas.



**Single Chamber**

## Features and Benefits

- **Fast cycling with positive cutoff** – provides precise operation with minimal dripping and spitting.
- **Rugged, production-proven construction** – minimizes downtime and maintenance costs.
- **Several models available** – dual-chamber guns can be used on drum painting lines to provide fast cleaning/ color change with no downtime. Stainless steel models apply waterbornes and highly corrosive materials, or can be used in special food or drug applications.
- **Compact, rugged construction** – ensures long life and low maintenance costs.
- **Extended-nozzle versions available – for coating recessed areas.**
- **Use Nordson Cross-Cut and dome nozzles** – for effective atomization of hard-to-atomize coatings with minimal paint waste.
- **Mounts to 1/2" round bar** – for fast, easy installation.
- **Retrofit kits available** – convert two single guns into a dual-chamber model for improved operating flexibility.
- **Optional air cylinder detent kit** – provides precise control of needle movement to regulate fluid stream.
- **Optional high pressure kit** – increases operating pressure range to 3000 psi.
- **Optional Nordson NH-4 heater** – reduces and controls material viscosity for improved operating performance and efficiency.



# Model A7A Automatic Airless Spray Guns

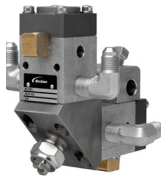
## Dual-Chamber Guns

Dual-chamber A7A guns incorporate the industry-proven features of the original A7A gun and share many common parts. Dual A7A guns are ideal for instant color change in robotic painting applications and on drum painting lines. Two colors can be circulated through the dual fluid body at the same time, and the appropriate color selected by actuating the respective air piston of the gun. Heated coating material is circulated close to the nozzle, providing uniform temperature and consistent painting quality.

Dual-chamber A7A guns are also ideal for applications requiring fast cleaning/color change, since one side can hold coating material, while the other side holds solvent or water for flushing the gun quickly.



Dual Chamber



Dual Chamber Angled

## Benefits of Heated Coatings

The addition of heat to a circulating system using A7A guns can improve overall operating efficiencies. Heating the coating improves atomization as well as finish quality by providing a more uniform, higher solids film application. The addition of Nordson NH-4 fluid heaters can help reduce and control material viscosity of high-solids coatings without adding solvents. This can result in better painting efficiency through reduced material use and costs.

## Nordson Cross-Cut® Nozzles

Nordson A7A guns can use patented Nordson Cross-Cut nozzles which provide improved atomization with a wide range of coating materials including high solids and other difficult-to-spray coatings. Cross-Cut nozzles produce greater atomizing energy at a given fluid pressure, compared to conventional spray nozzles. Excellent atomization is achieved at reduced fluid pressure, resulting in a softer, low-velocity spray which helps minimize dripping and material waste for a cleaner, more efficient operation.

## Easy-to-use, Operate

The A7A gun's needle and seat design ensures fast, clean on/off operation to eliminate dripping and spitting for reduced rejects, booth cleanup and material costs. Few moving parts ensure ease of installation and operation. Compact, rugged construction provides long life and easy field maintenance.

## Specifications

Single Chamber		
<b>Dimensions:</b>	<b>Height</b>	3.5 in. (89 mm)
	<b>Length</b>	3.5 in. (89 mm)
	<b>Width</b>	3.5 in. (89 mm)
<b>Weight</b>		15 oz. (.45 kg)
<b>Air Requirements</b>		40-120 psi (2.75-8.27 bar)
<b>Maximum Fluid Pressure:</b>	<b>Standard</b>	1700 psi (117 bar)
	<b>With high pressure option kit</b>	3000 psi (206 bar)
Dual Chamber		
<b>Dimensions:</b>	<b>Height</b>	4.375 in. (111 mm)
	<b>Length</b>	5.25 in. (133.35 mm)
	<b>Width</b>	3.5 in. (89 mm)
<b>Weight</b>		3.15 lbs (1.43 kg)
<b>Air Requirements</b>		40-120 psi (2.75-8.27 bar)
<b>Maximum Fluid Pressure:</b>	<b>Standard</b>	1700 psi (117 bar)
	<b>With high pressure option kit</b>	3000 psi (206 bar)
Dual Chamber Angled		
<b>Dimensions:</b>	<b>Height</b>	4.625 in. (117 mm)
	<b>Length</b>	6.0 in. (152 mm)
	<b>Width</b>	3.5 in. (89 mm)
<b>Weight</b>		2.65 lbs (1.20 kg)
<b>Air Requirements</b>		40-120 psi (2.75-8.27 bar)
<b>Maximum Fluid Pressure:</b>	<b>Standard</b>	1700 psi (117 bar)
	<b>With high pressure option kit</b>	3000 psi (206 bar)

© 2018 Nordson Corporation | All Rights Reserved | LQL-18-0380 | Revised 5/18

## Nordson Industrial Coating Systems

100 Nordson Drive  
Amherst, OH, 44001  
USA

**Phone:** +1.440.985.4000  
**www.nordson.com/ics**

 /Nordson\_Coating

 /NordsonICS

 /company/nordson-industrial-coating-systems

Find your local Nordson office:  
**www.nordson.com/icslocations**

Performance by design



CE ATEX

